

SKODA



The new  
**Kamiq**

## Explore your many sides

Exploring is part of who we are. From everyday discoveries to great voyages, you need a bold companion to explore the world. To explore yourself. Someone like the new Škoda Kamiq.

With the Kamiq, the go-anywhere capabilities of the small SUV are packaged in a playfully creative design. Inside, it is as attractive and functional as ever with a long list of comfort, connectivity and safety features. Life is made easier with touches of everyday magic like the LED headlights, Climatronic panel, Virtual Pedal and an immersive infotainment display.

That's the smart way to explore. That's what we call Škoda.





## The spring summer autumn winter collection

Bold style for the everyday explorer. The proportions of an SUV and the perfect size for the city. The Kamiq blends everything you need for your normal day with capabilities that come in handy when you set off on an adventure. With the new look, you will always be the focus of attention.



## Explore beauty from every angle

The attractive new look starts in the front, with the wider grille, sharper headlights and distinctive new bumper. Together, they give the new Kamiq a more solid, dynamic style. Driving away, the rear bumper with integrated diffuser and restyled rear lights will catch your attention. A family explorer with striking looks.



### Panoramic roof

On the outside, the panoramic roof underscores the sleek, stylish look. On the inside, it brightens the interior and opens the view of the sky above.

### Unmistakable shape

Together with rear reflectors, the taillights create the characteristic C-shape, making the Kamiq easily identifiable at the first look. The revamped rear bumper with Platin Grey integrated rear diffuser adds to the bold style.



## Turn on the light show



### Matrix headlights

They catch the eye and help you see. The three-dimensional design with crystal structure is one of the most prominent visual features of the car, while the advanced TOP LED Matrix technology improves visibility for the driver.

### Dynamic rear lights

Helping you be seen with the bright LED light and immersive design. The crystalline elements and dynamic turn signal function of the TOP LED rear lights will attract the attention of everyone behind you.



**Virtual Pedal**

Full hands are not a problem anymore. With Virtual Pedal, just a swing of the foot under the bumper is enough to open the door. Available in combination with KESSY and electric 5th door.

**KESSY**

No more hassle looking for your keys. With the Keyless Entry, Start, and Exit System, the doors unlock or lock again with just a touch of the door handle. You just need to have the key in your pocket.



**Door edge protection**

Protect both your car and others in the car park. Door edge protection prevents door dings from happening with a simple, reliable mechanical device.

KAMIQ



## Exploration begins within

Family friendly, yet also driver focused and stylish. The new interior's dominant features include the 10" Virtual Cockpit and the 9" Škoda Navigation in the middle of the dashboard. The dashboard also boasts a choice of new upholstered décors made of fabric, Suedia or the new Carbon look. These are matched by the redesigned seat upholstery for all trim levels. The new ambient lightning with two switchable colours sets off the atmosphere with a finishing touch.





### **Climatronic**

Maintaining a pleasant climate on board is now easier than ever. The Climatronic air-conditioning system is fitted with a pair of buttons that allow you to adjust the air flow without taking your eyes off the road.

## **Fulfilment is just a tap away**

In today's digital world, you need your everyday companion to take care of your digital needs as well. Whether it's charging your devices or providing you with the most up-to-date information on a large screen, the Kamiq has a solution.



### **Always charged**

With a pair of USB-C ports as standard and optionally available wireless charging, you can keep your devices charged at all times with ease.

### **Connectivity**

You can display your apps on the Infotainment display using Apple CarPlay and Android Auto either wirelessly or via the USB-C ports, which also offer fast 45 W charging for your devices.



## Škoda Connect: Take the online world with you

Stay connected wherever you are. Being fully and permanently online means always having access to entertainment, information, and possible assistance while on the move. Škoda Connect is your gateway to a world of unlimited communication options.



### MyŠKODA Essentials

Enjoy full control of your car. Download MyŠKODA Essentials and access all necessary services anytime, whether it's driving data, fuel range, lock and unlock or even where you last parked.

### Online Traffic Information

With Online Traffic Information, you always get up-to-date information, saving you time and the stress of sitting in traffic jams. If enabled, the navigation system will automatically recalculate the route to arrive at the destination just in time.



## Additional connectivity options

Discover additional options and features. For example, with Laura, a digital voice assistant is available in your car. With the SmartLink feature, supporting Apple CarPlay and Android Auto, the car's infotainment system allows you to use your phone safely while driving. You can also enhance the in-car connectivity with additional infotainment apps such as Weather, News, Digital Manual, Traffication, and many more.



### Traffication

The Traffication app increases your safety by providing traffic-related warnings from the vicinity of the vehicle. Running in the background, it alerts you if you are attempting to drive the wrong way down a road. Notifications are also shown in the event that hazard lights are activated in the radius of your vehicle.

### Laura digital voice assistant

This online-based voice control system understands fluent sentences. Say the destination with natural voice input, dictate text messages, or even ask her to tell you a joke. The online part of Laura is ready for anything. To start fulfilling your wishes, simply contact her by saying "Okay, Laura!"



## Full of surprises, just like you

You and your family or friends can explore the world. The Kamiq takes care of all the small things. Everything you might need can be easily stored in various clever spaces around the cabin. Always on hand, always ready to explore.



### Box for rear passengers

Rear passengers will enjoy the smart storage box on the centre tunnel. It includes a flexible cupholder which can be folded away when not used to make more room for anything they might want on hand.

### Double pocket

Keep your things organised with the double pockets on the rear sides of the front seats. The larger one is perfect for a notebook or a laptop computer, while the smaller one nicely fits a smartphone.



### Net programme

Everything in its place and easy to see. This set of three nets keeps your items from moving around while keeping them in good view.

## Treat your things like passengers

Wherever your exploring takes you, it's always good to have space for everything. Even better to have things well-organised and secured safely. With 400 litres of luggage space and various clever details and storage spaces, you'll never have to leave anything behind.



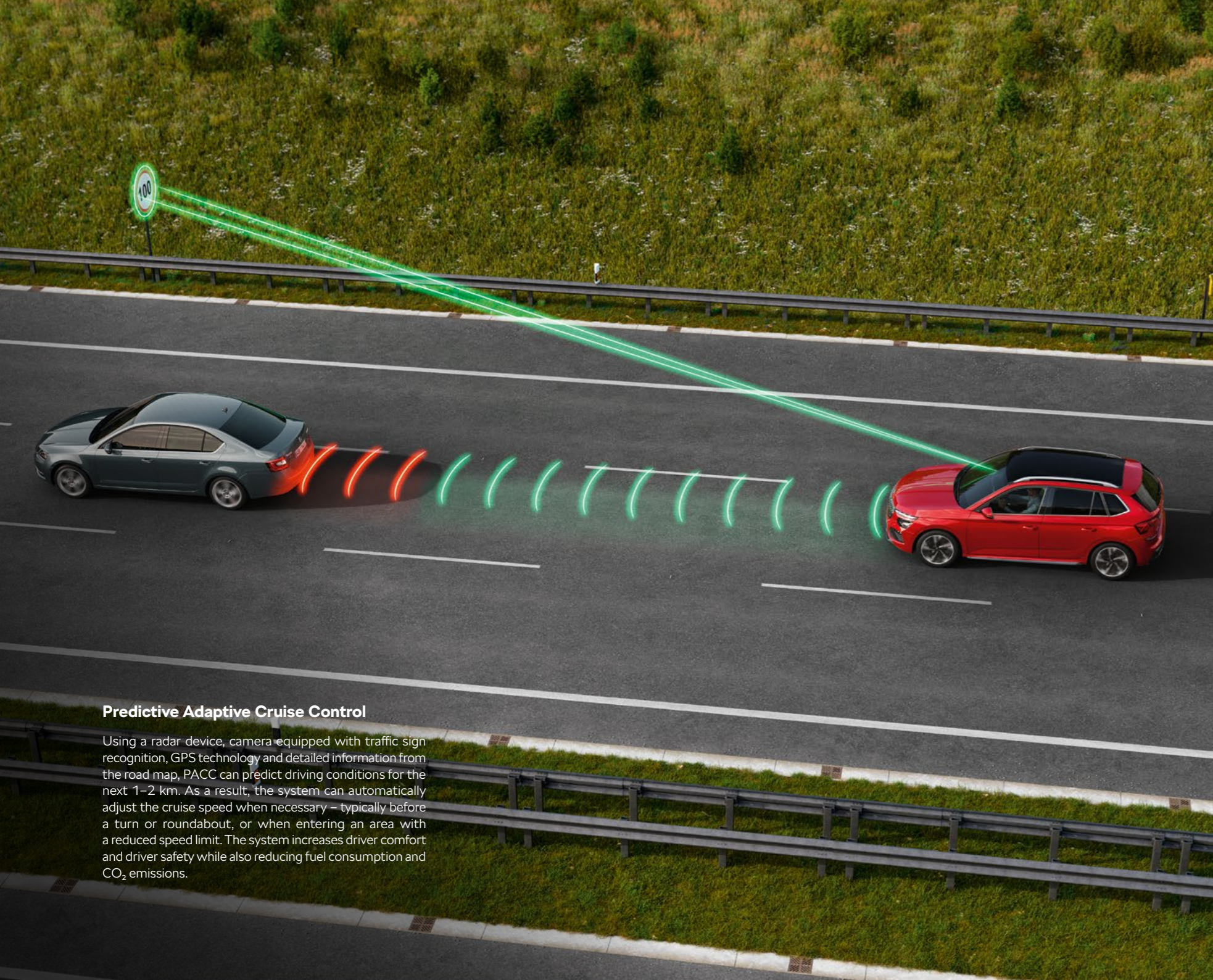
### Net pocket

Lighter items that need to be on hand even when the boot is full can be stored in the practical net, out of sight under the luggage room cover.



### Cargo elements

The easy way to secure larger items. Cargo elements are fixed to the floor using velcro and can be folded into any angle.

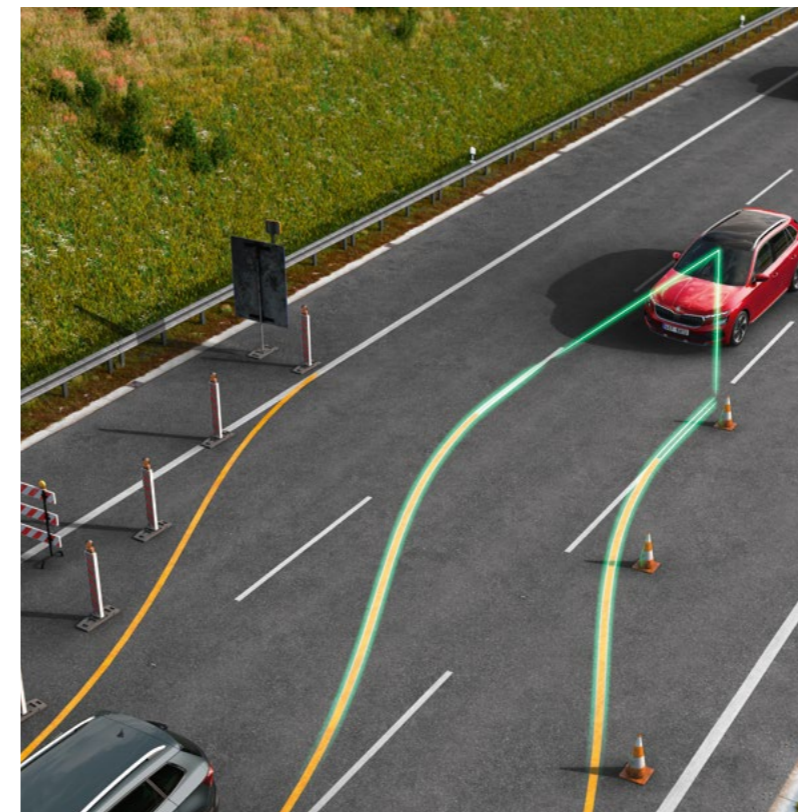


### Predictive Adaptive Cruise Control

Using a radar device, camera equipped with traffic sign recognition, GPS technology and detailed information from the road map, PACC can predict driving conditions for the next 1–2 km. As a result, the system can automatically adjust the cruise speed when necessary – typically before a turn or roundabout, or when entering an area with a reduced speed limit. The system increases driver comfort and driver safety while also reducing fuel consumption and CO<sub>2</sub> emissions.

## Travel Assist

The Travel Assist system combines Adaptive Cruise Control (including Front Assist) and Adaptive Lane Assist functions. For maximum safety, the system must be constantly monitored by the driver. That's why a capacitive steering wheel detects the driver's tactility, providing an interactive interface to the system. If the driver is not engaged in driving, the system runs issues a visual and audible warning and eventually disengages.



### Adaptive Lane Assist

The system is capable of keeping the car in the middle of the correct lane and of alerting the driver in case of deviation. It can also take control of the car in the event of lane changes during roadworks.



### Side Assist

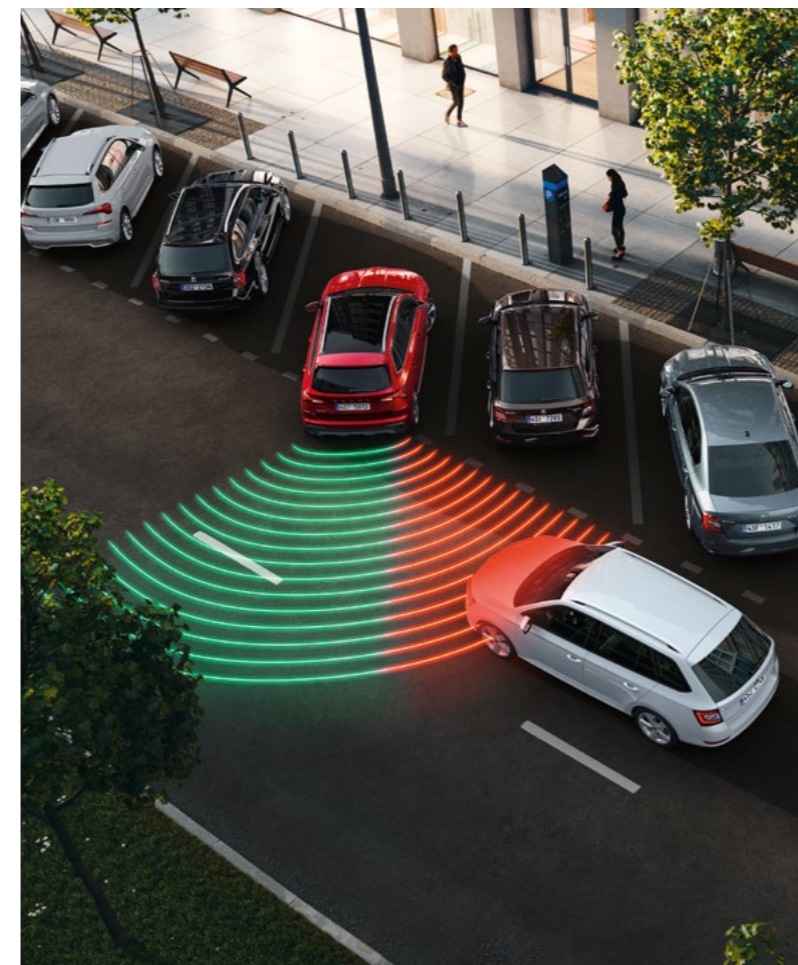
Using radar sensors in the rear bumper, Side Assist (which can detect other vehicles and harder to see objects like cyclists up to 70 m away) monitors the areas behind and beside your car. Based on the distance and speed of the surrounding vehicles, it decides whether or not it should warn the driver.



### Matrix Beam Function

The LED Matrix headlights feature Matrix Beam Function. This allows you to use the high beams continuously, without blinding other drivers. Using a windscreen camera, the Matrix Beam Function responds to the traffic situation and turns off only some segments of the light. Other segments are turned on and illuminate the road. The Matrix Beam Function also uses information from the navigation system. Thanks to it, the high beams will only turn on when you are out of a built-up area.

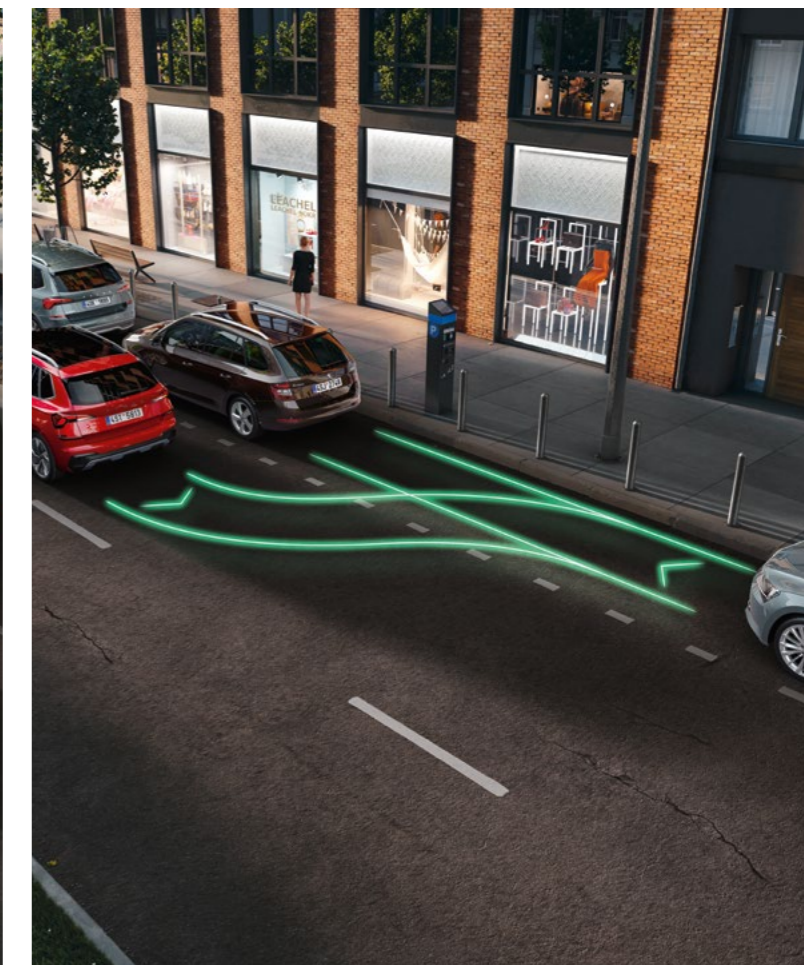
## Additional experts on board



### Rear Traffic Alert

Using the Side Assist sensors in the rear bumper, Rear Traffic Alert helps you reverse safely from a parking space during poor visibility. It can even engage the brakes automatically if it detects imminent danger.

You can encounter various things on the road. To ensure that the car is ready to handle all situations that may occur en route, additional assistants with multiple functions are on hand to help or fill in for the driver.



### Park Assist

Minimise the hassle of parking in tight spots with Park Assist. It automatically selects an appropriate parking place and safely parks in a row of parallel or perpendicularly parked vehicles.



# Monte Carlo





## Our sporty legacy, now yours

In the true spirit of Škoda's rallying legacy, the Kamiq Monte Carlo is ready to take you through the wintry mountains as well as into the glamorous city streets. A sporty style for a night on the town or a weekend out of it.



### A champion on every road

Joyful and functional. The unmistakable looks start with the aerodynamic front bumper with integrated spoiler, further enhanced with the gloss black details. The TOP LED Matrix headlights come as standard so you can see and be noticed.

The gloss black diffuser in the back highlights the bold shape of the rear bumper and underscores the sporty flair of the Kamiq Monte Carlo. The drivers behind you will also notice the cool gloss black lettering.



## Treat the extrovert within you

The dynamic features of the Monte Carlo interior empower you to enjoy driving even more. The design and the materials are there to bring a touch of magic to the everyday. The Carbon look dashboard pad and Carbon door inserts create an attractive, modern style, highlighted by the typical red accents on the upholstery. The multifunction sport steering wheel in perforated leather, sports pedal covers and black headliner create a dynamic atmosphere to amplify your driving fun. The rich feature list, including Climatronic climate control, 8-speaker stereo and switchable ambient lighting is there for comfort, while the Drive Mode Select allows the driver to choose between the dynamic or cossetting style of the Kamiq's character.



## Follow your instinct, not their expectations

The Monte Carlo creates a sportier ambience without compromising on comfort or practicality. It comes with sports seats, sports steering wheel, Carbon look dash pad and door inserts and two-colour ambient lighting.



### Focused on the driver

The multifunctional sports steering wheel is upholstered with perforated leather for even better grip and Monte Carlo badge for added style. The optional 10" Virtual Cockpit comes with specific sport skin.

### Sports seats

The Monte Carlo seats will catch your attention with their sporty red and grey accents. They provide great lateral support for dynamic driving and plenty of comfort for your everyday commute.



PUERTO RICO  
*Vica*  
HOTEL

SKODA

5SE 1219

KAMIQ



### Studio interior

Grey metallic pad with glossy black décor  
Black/grey fabric upholstery

### Essence

The standard equipment of the Essence version includes 9" Škoda Navigation, 8" Digital Display, manual air conditioning, Bluetooth, rear sensors, LED headlights and more.



### Studio

The Studio interior boasts a modern, practical design in a combination of black/grey upholstery with grey metallic pad, glossy black décor and satin black door inserts.



### Loft interior

Krepp recycled pad with glossy black décor  
Krepp recycled/black fabric upholstery

## Selection

The standard equipment of the Selection version includes electric windows front and rear, multifunction steering wheel, fabric dashboard pad, height-adjustable front seats, Hill-Hold Control, Easy Start, LED fog lights, mobile phone pockets and more. The Selection trim is available with a choice of four interior design selections.



### Loft

The Krepp recycled pad on the dashboard, Krepp recycled seats and glossy black décor give the Loft interior a stylish contemporary feel.



### Lodge interior

Grey Suedia pad with copper décor  
Grey Suedia/black fabric upholstery

## Selection



### Lodge

The combination of grey Suedia pad and upholstery with copper décor and two-colour ambient lighting give the Lodge interior a feeling of luxury, underscored by the leather multifunction steering wheel, floor mats, and rear armrest.



### Dynamic interior

Black Suedia pad with red décor  
Black Suedia/black fabric upholstery

## Selection



### Dynamic

The centrepiece of the Dynamic interior are the sports seats, complemented by the sports steering wheel, black Suedia pad and red décor. The black roof liner, sports pedal covers, and door sills with "Kamiq" lettering complete the sporty theme.





### Suite interior

Black Suedia pad with chrome décor  
Black Suedia/black leather upholstery

## Selection



### Suite

The elegant style of the Suite interior starts with the black leather/Suedia seat upholstery and is further emphasised by chrome décor and black Suedia pad. The leather steering wheel, heated front seats and electric driver's seat complete the image of luxury.



### Monte Carlo

Carbon look pad with red décor  
Carbon look/black fabric upholstery

## Monte Carlo

The standard equipment of the Monte Carlo version includes Climatronic, auto dimming mirror, Drive Mode Select, Wireless SmartLink, 8-speaker stereo, Carbon look dashboard pad, ambient lighting, TOP LED Matrix headlights, LED fog lights with Corner function and more.



### Monte Carlo

The unique style of the Monte Carlo version continues with the interior, highlights of which include the Carbon look sports seats with red accents, Carbon look pad and door inserts, sports steering wheel and pedals and black roof liner.

## Colours



Moon White metallic



Candy White uni



Brilliant Silver metallic



Phoenix Orange metallic



Velvet Red metallic



Energy Blue uni



Race Blue metallic



Graphite Grey metallic



Magic Black metallic

## Wheels



18" Ursa silver alloy wheels with black Aero covers



18" Ursa black alloy wheels, polished\*



18" Fornax silver alloy wheels



17" Propus Aero black/silver alloy wheels, polished



17" Stratos silver alloy wheels



16" Cortadero Aero silver alloy wheel



18" Vega Aero black/silver alloy wheels, polished



17" Kajam black alloy wheels with black Aero covers\*



17" Kajam silver alloy wheels with black Aero covers



16" Montado Aero black/silver alloy wheels, polished



16" Nyota silver alloy wheels



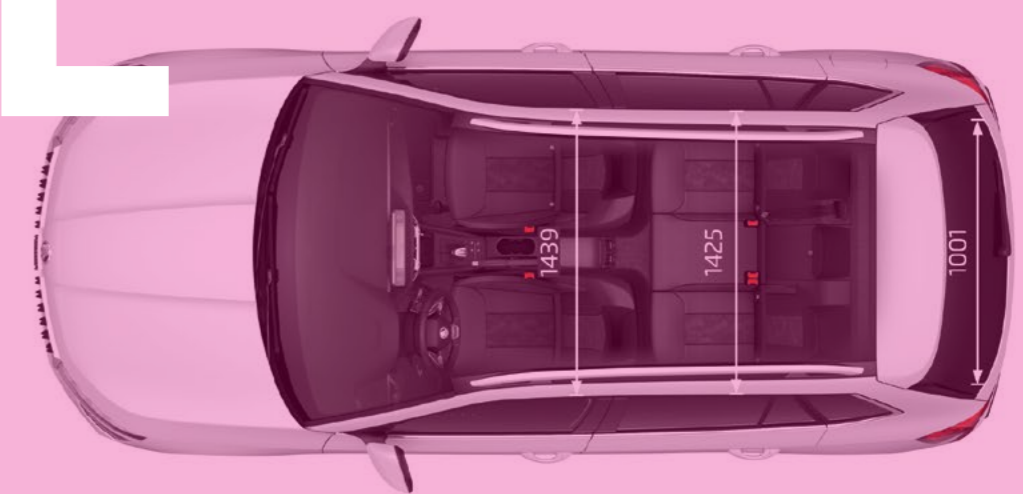
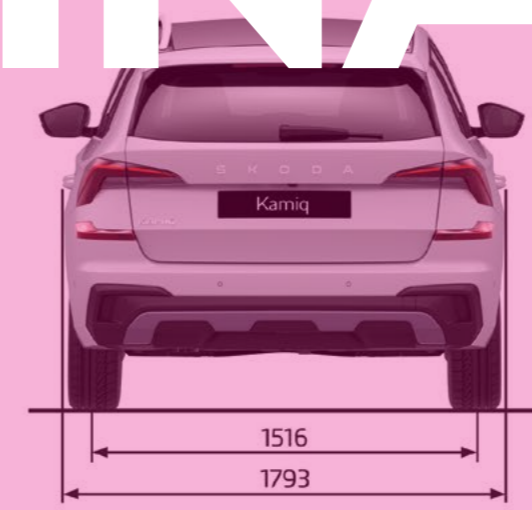
16" steel wheels with Tecton covers

\* Available only for Monte Carlo

Technical specifications	1.0 TSI/70 kW	1.0 TSI/85 kW	1.5 TSI/110 kW
	Turbocharged petrol engine	Turbocharged petrol engine	Turbocharged petrol engine
<b>Engine</b>			
Cylinders/Cubic capacity (cc)	3/999	3/999	4/1,498
Max. performance/Revs (kW/rpm)	70/5,000–5,500	85/5,500	110/5,000–6,000
Max. torque/Revs (Nm/rpm)	175/1,600–3,500	200/2,000–3,500	250/1,500–3,500
Air pollution regulation	EU6EA	EU6EA	EU6EA
Fuel	Petrol, RON min. 95	Petrol, RON min. 95	Petrol, RON min. 95
<b>Performance</b>			
Maximum speed (km/h)	183	196 (195)	214 (213)
Acceleration 0–100 km/h (s)	11	9.7 (10.2)	8.3
Fuel consumption WLTP (l/100 km) – combined	5.5–5.9	5.3–5.8 (5.6–6.0)	5.6–6.0
CO <sub>2</sub> emissions WLTP (g/km) – combined	123–133	121–130 (126–135)	127–136
<b>Power transmission</b>			
Type	Front-wheel drive	Front-wheel drive	Front-wheel drive
Transmission	Manual 5-speed	Manual 6-speed (Automatic 5-speed DSG)	Manual 6-speed (Automatic 7-speed DSG)
<b>Weight</b>			
Kerb weight – with 75 kg driver (kg)	1,224–1,381	1,234–1,396 (1,234–1,417)	1,277–1,431 (1,280–1,451)
Payload – incl. driver and extra equipment (kg)	434–556	429–552 (428–552)	454–576 (454–576)
Total weight (kg)	1,695–1,740	1,697–1,750 (1,697–1,770)	1,731–1,807 (1,731–1,800)
Trailer load without brakes (max. kg)	610	610 (620)	630 (640)
Trailer load with brakes – 12% (max. kg)	1,000	1,200	1,250
<b>Further specifications</b>			
Body		Front brakes	Disc brakes with inner cooling and with single-piston floating calliper
Type	5-seater, 5-door, 2-compartment	Rear brakes	Drum brakes; alternatively disc brakes depending on engine version
Turning circle diameter (m)	10.8	Clearance (mm)	188
Chassis		Luggage storage space – without spare tyre (max. l)	
Front axle	McPherson suspension with lower triangular links and torsion stabiliser	Without spare tyre, with rear seat backrests – upright/down	400/1,395
Rear axle	Compound link crank-axle	Tank capacity (l)	50

# NOT

# FINAL



WLTP – World harmonized light-duty vehicles test procedure.  
The weights depend on the equipment version of the car.  
( ) Applies to the version with automatic transmission.

Technical specifications and drawings apply to the Essence and Selection versions. The parameters for Monte Carlo cars may differ. For more information, contact your Škoda partner.

#### Image disclaimer

The images presented in this catalogue (brochure) are used for illustrative purposes only and are not intended to form part of any contract or warranty. They display pre-series cars and certain illustrations, features, parts and equipment may differ from the actual production cars and from country to country. To get the exact specification of features, parts and equipment, please get in touch with your nearest local Škoda dealer.

If you've enjoyed reading  
about it — imagine driving it.  
**Call us to arrange  
a test drive!**

11/2024

Your Škoda partner:



#### MyŠKODA App

Enjoy full control of your car. Download MyŠKODA App and access all necessary features anytime, whether it's driving data, fuel range, planning a route or even where you last parked.